

KORFUND VIBRO-ISOLATORS

*USED FOR CONTROLLING VIBRATION
GENERATED BY HEATING, VENTILATING
AND AIR CONDITIONING MACHINERY
AND ALLIED EQUIPMENT*

**SERIES WSC
STABLE STEEL SPRING
ISOLATORS**

**LOAD PER ISOLATOR
75-2920 lbs.**

**STATIC DEFLECTIONS
1½" - 3" - 5" SERIES**

- **THE UNHOUSED, UNRESTRAINED, HIGHLY STABLE STEEL SPRING ISOLATOR THAT WILL NOT LEAN OR TOPPLE!**
- **THE SPRING IS EQUALLY STABLE IN THE HORIZONTAL AND VERTICAL DIRECTIONS.**
- **COMPONENTS ARE NOT WELDED. THEY CAN BE EASILY STOCKED AND INTERCHANGED IN THE FIELD.**

THIS ISOLATOR ASSURES THE SPRING OPERATING WITH MAXIMUM VIBRATION CONTROL CAPABILITY SUPERIOR TO ANY STEEL SPRING ISOLATOR OF EQUAL STATIC DEFLECTION.

The versatile SERIES WSC Isolator is designed for 5 different mounting arrangements. For details see illustrations on the reverse side of this bulletin.

**Type WSCS
and
Type WSCD**

Used with machinery which can be installed directly on mounts. Also used with Structural Steel Bases for Fan and Motor Installations. Literature and drawings illustrating these bases available on request.

WSCS is used when the diameter of the bolt hole in the machine leg or base is large enough to accommodate the adjusting bolt furnished with the isolator. However, when the bolt hole in the machine base is smaller than the diameter of the isolator adjusting bolt, the **WSCD** is used.

Type WSCA

Used under angle brackets when supplied with Korfund RCPF-Structural Perimeter Frames for reinforced concrete blocks. Literature and drawings illustrating these frames available on request.

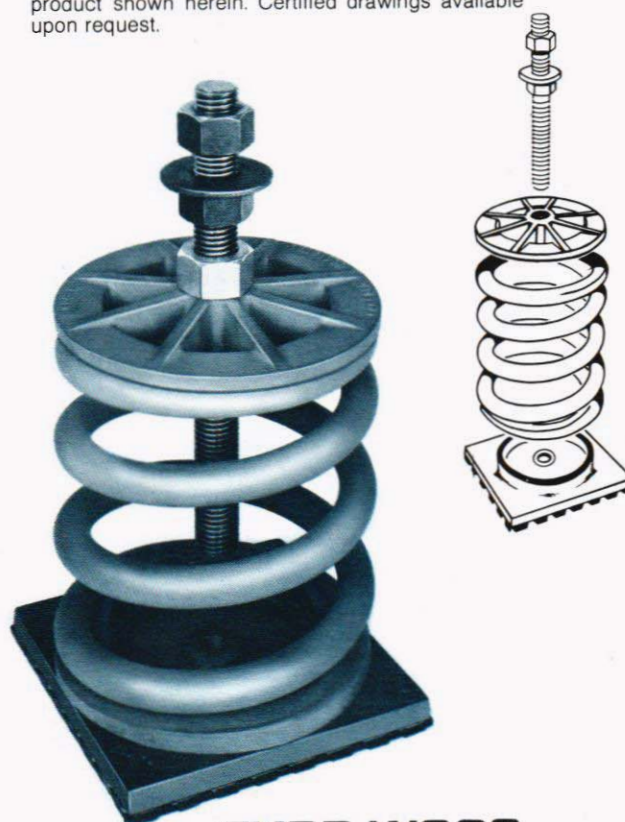
**Type WSCB
and
Type WSCB-F**

Used in pockets recessed in concrete blocks. Metal enclosures, to form pockets, are supplied with isolators. These enclosures are either attached to wooden forms for pouring concrete, or they will be provided welded to Korfund RCPF Perimeter Frames.

WSCB is used with concrete blocks 10" thick minimum.

WSCB-F is used with concrete blocks 6" thick minimum.

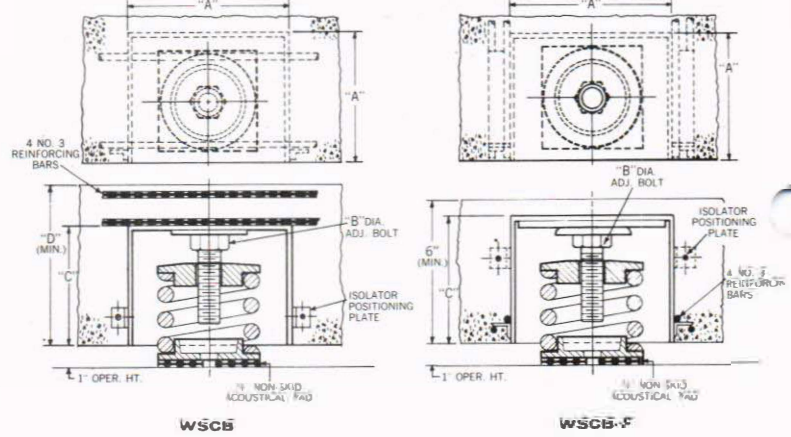
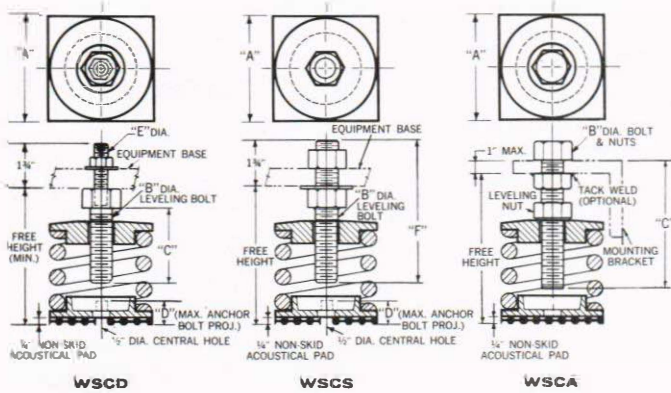
Korfund Dynamics Company reserves the right to change without notice or obligation, any dimension, specification, or material, or to discontinue any product shown herein. Certified drawings available upon request.



TYPE WSCS

Series WSC Isolators are immediately available from stocks maintained by Korfund and Korfund Stocking-Representatives and Distributors located in most of the major cities in the United States and Canada.

Series WSC Isolators with larger deflections and load bearing capacities or isolators with limit stops, snubbers, dampers and other devices to control movement of machinery are available on request.



| Designation | | (K) Spring Constant | Spring Color Code | TYPE WSCS & WSCD | | | | | | | | TYPE WSCA | | | | Lb/In. (W) |
|------------------|------------------|------------------------|-------------------|------------------|-----------|-----|-------|-------|-----|-------|--------|-----------|-----------|-----|--------|------------|
| Max. Defl. (in.) | Max. Load (lbs.) | | | Type WSCS | Ingr. Ht. | A | B | C | D | E | F | Type WSCA | Ingr. Ht. | A | B | |
| 1.5 - 75 | 50 | PINK | 5 3/4 | 5 3/4 | 3 | 3/8 | 4 | 1 1/4 | 3/8 | 5 1/4 | 6 3/8 | 7 3/8 | 3 | 3/8 | 6 | 3 |
| 1.5 - 115 | 75 | BROWN | | | | | | | | | | | | | | |
| 1.5 - 170 | 115 | BLUE | 6 1/2 | 6 1/2 | 3 | 3/8 | 4 | 1 1/4 | 1/2 | 7 | 8 1/2 | 9 1/2 | 4 | 3/4 | 5 1/2 | 11 |
| 1.5 - 255 | 170 | RED | | | | | | | | | | | | | | |
| 1.5 - 385 | 255 | WHITE | 7 | 7 3/8 | 4 | 3/4 | 4 1/2 | 1 1/4 | 1/2 | 7 | 8 1/2 | 9 1/2 | 4 | 3/4 | 5 1/2 | 11 |
| 1.5 - 575 | 385 | GREEN | | | | | | | | | | | | | | |
| 1.5 - 865 | 575 | BLACK | 8 1/2 | 8 3/4 | 4 | 3/4 | 4 1/2 | 1 1/4 | 1/2 | 7 | 8 1/2 | 9 1/2 | 4 | 3/4 | 5 1/2 | 11 |
| 1.5 - 1300 | 865 | YELLOW | | | | | | | | | | | | | | |
| 1.5 - 1950 | 1300 | PURPLE | 10 | 8 3/4 | 5 1/2 | 7/8 | 6 1/2 | 1 1/2 | 1/2 | 9 | 10 3/4 | 11 3/4 | 5 1/2 | 7/8 | 9 | 15 |
| 1.5 - 2920 | 1950 | ORANGE | | | | | | | | | | | | | | |
| 3 - 75 | 25 | GRAY | 8 1/2 | 6 3/4 | 4 | 3/4 | 4 1/2 | 1 1/4 | 1/2 | 7 | 9 3/4 | 10 3/4 | 4 | 3/4 | 8 1/2 | 6 |
| 3 - 112 | 37.5 | PINK | | | | | | | | | | | | | | |
| 3 - 168 | 56 | BROWN | 10 | 8 3/4 | 5 1/2 | 7/8 | 6 1/2 | 1 1/2 | 1/2 | 9 | 10 3/4 | 11 3/4 | 5 1/2 | 7/8 | 9 | 15 |
| 3 - 253 | 84 | BLUE | | | | | | | | | | | | | | |
| 3 - 380 | 127 | RED | 11 | 8 3/4 | 5 1/2 | 7/8 | 6 1/2 | 1 1/2 | 1/2 | 9 | 10 3/4 | 11 3/4 | 5 1/2 | 7/8 | 9 | 15 |
| 3 - 570 | 190 | WHITE | | | | | | | | | | | | | | |
| 3 - 855 | 285 | GREEN | 13 | 10 | 7 | 1 | 5 | 1 1/2 | 3/8 | 8 | 14 1/4 | 15 1/4 | 7 | 1 | 12 1/2 | 25 |
| 3 - 1280 | 427 | BLACK | | | | | | | | | | | | | | |
| 3 - 1920 | 640 | YELLOW | 14 | 11 | 7 | 1 | 5 | 1 1/2 | 3/8 | 8 | 14 1/4 | 15 1/4 | 7 | 1 | 12 1/2 | 31 |
| 3 - 2880 | 960 | PURPLE | | | | | | | | | | | | | | |
| 5 - 120 | 24 | ORANGE | | | | | | | | | | | | | | |
| 5 - 160 | 32 | GRAY | | | | | | | | | | | | | | |
| 5 - 214 | 42.8 | PINK | | | | | | | | | | | | | | |
| 5 - 285 | 57 | BROWN | | | | | | | | | | | | | | |
| 5 - 380 | 76 | BLUE | | | | | | | | | | | | | | |
| 5 - 510 | 102 | RED | | | | | | | | | | | | | | |
| 5 - 678 | 136 | WHITE | | | | | | | | | | | | | | |
| 5 - 904 | 181 | GREEN | | | | | | | | | | | | | | |
| 5 - 1200 | 240 | BLACK | | | | | | | | | | | | | | |
| 5 - 1610 | 322 | YELLOW | | | | | | | | | | | | | | |
| 5 - 2150 | 430 | PURPLE | | | | | | | | | | | | | | |
| 5 - 2870 | 574 | ORANGE | | | | | | | | | | | | | | |

| Designation | | (K) Spring Constant | Spring Color Code | TYPE WSCB & WSCB-F | | | | WSCB | WSCB-F |
|------------------|------------------|------------------------|-------------------|--------------------|--------|----|----|------|--------|
| Max. Defl. (in.) | Max. Load (lbs.) | | | A | B | C | D | | |
| 1.5 - 75 | 50 | PINK | 4 1/2 | 3/8 | 5 1/2 | 10 | 6 | 8 | |
| 1.5 - 115 | 75 | BROWN | | | | | | | |
| 1.5 - 170 | 115 | BLUE | 5 1/2 | 3/4 | 6 1/2 | 11 | 12 | | |
| 1.5 - 255 | 170 | RED | | | | | | | |
| 1.5 - 385 | 255 | WHITE | 6 1/2 | 7/8 | 7 1/2 | 12 | 16 | | |
| 1.5 - 575 | 385 | GREEN | | | | | | | |
| 1.5 - 865 | 575 | BLACK | 7 1/2 | 1 | 8 1/2 | 13 | 18 | | |
| 1.5 - 1300 | 865 | YELLOW | | | | | | | |
| 1.5 - 1950 | 1300 | PURPLE | 8 1/2 | 1 1/8 | 9 1/2 | 14 | 21 | | |
| 1.5 - 2920 | 1950 | ORANGE | | | | | | | |
| 3 - 75 | 25 | GRAY | 9 1/2 | 1 1/4 | 10 1/2 | 15 | 24 | | |
| 3 - 112 | 37.5 | PINK | | | | | | | |
| 3 - 168 | 56 | BROWN | 10 1/2 | 1 1/2 | 11 1/2 | 16 | 27 | | |
| 3 - 253 | 84 | BLUE | | | | | | | |
| 3 - 380 | 127 | RED | 11 1/2 | 1 3/4 | 12 1/2 | 17 | 30 | | |
| 3 - 570 | 190 | WHITE | | | | | | | |
| 3 - 855 | 285 | GREEN | 12 1/2 | 2 | 13 1/2 | 18 | 33 | | |
| 3 - 1280 | 427 | BLACK | | | | | | | |
| 3 - 1920 | 640 | YELLOW | 13 1/2 | 2 1/4 | 14 1/2 | 19 | 36 | | |
| 3 - 2880 | 960 | PURPLE | | | | | | | |

ABBREVIATED SPECIFICATIONS FOR TYPES WSCS, WSCD, WSCA, WSCB, & WSCB-F VIBRO-ISOLATORS

The Korfund Vibro-Isolator shall consist of an unoused stable steel spring with leveling adjustment and cast top and base plates that permit field changes of springs without welding. To achieve stability, the horizontal stiffness of the spring must be at least equal to the vertical.

When WSCB and WSCB-F Series are used, the Vibro-Isolator shall be supplied with a metal enclosure to form a pocket in the concrete inertia block for the stable spring isolator. The box shall have as an integral part a load-bearing plate suitable for distributing the load of the isolator adjusting-bolt.

In the equipment list, the following deflections are suggested for the various types, sizes and speeds of equipment:

| Equipment | HP | Minimum Static Defl. (Inches) |
|--------------------------------|-------------|-------------------------------|
| Centrifugal Pumps | Under 1 HP | 1/4" |
| | 1 to 100 HP | 1" |
| | Over 100 HP | 2" |
| Reciprocating Compressors | Under 10 HP | 1" |
| | 10 to 25 HP | 2" |
| | Over 25 HP | 3 3/4" |
| Chillers & Absorption Machines | | 1" |

Fans, Air Handling Units, Cooling Towers, etc.

| For Single Inlet Single Width: | | | For Double Inlet Double Width: | | |
|--------------------------------|-------------|----------------------|--------------------------------|-------------|----------------------|
| Wheel Diam. | Speed RPM | Minimum Static Defl. | Wheel Diam. | Speed RPM | Minimum Static Defl. |
| 18" to 83" | 200-450 | 3 3/4" | 18" to 67" | 200-450 | 3 3/4" |
| Over 83" | 200-950 | 3 3/4" | Over 67" | 200-950 | 3 3/4" |
| 18" to 57 1/2" | 451-600 | 2" | 18" to 47 1/2" | 451-600 | 2" |
| | 601-up | 1" | | 601-up | 1" |
| 58" to 83" | 451-950 | 2" | 48" to 67" | 451-950 | 2" |
| | 951-up | 1" | | 951-up | 1" |
| Over 83" | 951 to 1140 | 2" | Over 67" | 951 to 1140 | 2" |
| | 1141-up | 1" | | 1141-up | 1" |

For under 200 RPM and under 18" wheel diameter, use Korfund Elastomer Mounts. Literature available on req.



DFA Sales

www.Korfund.com
info@Korfund.com